



ON THE ROCKS



A Newsletter of the Michigan Basin Geological Society

2008-2009 Number 5

www.mbgs.org

January 2009

EVENTS

Wednesday, January 14, 2009: MBGS meeting will be held at Michigan State University, Natural Science building at 7:00 pm in room 204. The speaker is Allen Modroo, from Core Energy LLC, presenting "3D Seismic Flower Structures". See talk details and location information included in the newsletter.

Notes from the editor:

- **Meeting room change** – Please note that the MBGS monthly meeting that are held at Michigan State University, Natural Science building is now in room 326.
- A member sent in a note of thanks regarding the Rock and Mineral educational kits. Thank you Grant for sharing!

I wanted to thank you and the MBGS for the rock sets. As a Business Buddy, I presented "What a Geologist Does" to the 4th graders at Cass Elementary in Livonia. The 58 students were engaged and asked great questions. Programs like this enable students to make a connection with class work and their future. The rock sets were handed out with great excitement and made the experience extra memorable. If they send any pictures, I will forward.

Thanks
Grant Dewitt

- MBGS has a **core display** available for use that visually demonstrates permeability/porosity. There are posters available for use with the core display. Contact Mark Wollensak at wollensak@voyager.net to reserve this great educational tool.





MBGS Field Trips Update



Thanks to all the members that responded to the MBGS Field Trip Survey – your input is greatly appreciated. The following are some of the results from the Survey.

- The Copper Country Trip generated great interest – June 2009
- Yellowstone Trip has been postponed to 2011
- Bedford, Indiana Caving – October or November 2009
- New Trips of Interest
 - Iron Range: Gogebic & Menominee areas
 - UP Limestone Quarries: Fiborn & Chippewa areas
 - Coal Workings of Michigan

If you have any contacts who may be willing to lead a trip to one of the new areas listed – please contact Mark Wollensak at wollensak@voyager.net.

MBGS and the Michigan Geological Repository for Research and Education
are sponsoring the
2010 AAPG Eastern Section Meeting in Kalamazoo, Michigan

Date: September 26 – 28, 2010
Venue: Radisson Plaza Hotel and Suites



American Association of Petroleum Geologists

An International Geological Organization

We are in need of volunteers to chair committees and to assist on committees. This is a great opportunity to work and meet others in our profession. A list of the committees positions that are still in need of a chair are listed below. Find a committee you are enthusiastic about and join us in showing the Eastern Section AAPG what a great host Michigan can be!!!

Committee Chairs Still Needed

Sponsorships
 Webmaster
 Judging

Audio/Visual
 Graphics and Media
 Guest Programs

Student Volunteers
 Coordinators

Please contact Robb Gillespie at robb.gillespie@wmich.edu to get involved.

Important Information: Committee tasks/descriptions are found on the AAPG-ES website at the following link:

<http://karl.nrcce.wvu.edu/esaapg/Esguide.pdf>

Important Meeting: A meeting of the Committee chairs is currently scheduled on January 7th, 2009 prior to the MBGS executive committee

Current Meeting Itinerary

Sept 25th Sat: Field Trips
 Sept 26th Sun: Meeting Program
 Sept 27th Mon: Meeting Program, also icebreaker/social at Air Zoo in evening
 Sept 28th Tues: Meeting Program
 Sept 29th Wed: Field Trips

2007-2008 MBGS Officers

The Executive Committee meeting minutes are available on our website at www.mbgs.org

PRESIDENT:

EMANUAL (EZ) MANOS

Detroit Salt Mine
2164 E. Allen Road, Howell, MI
313-841-5144, fax 313-841-0466, ezmanos@detroitssalt.com

VICE PRESIDENT:

CRAIG JOHNSON,

NTH Consultants, Ltd
608 S. Washington Ave. Lansing, MI 48933
517-702-2950, fax 517-485-8323,
crjohnson@nthconsultants.com

SECRETARY:

JENNIFER JENNINGS

Michigan Department of Environmental Quality
P.O. Box 30256
Lansing, MI 48909
517-335-0432 jenningsj@michigan.gov

TREASURER & PUBLICATIONS:

TOM HOANE FMFM, DNR

P.O. Box 30452, Lansing, MI 48909-7952
Bus 517-241-3769, fax 517-373-2443 hoanet@michigan.gov

BUSINESS MANAGER:

TOM GODBOLD OGS, DEQ

P.O. Box 30256, Lansing, MI 48909-7756
Ph: 517-241-1545, Fax 517-241-1595
godboldt@michigan.gov

PAST-PRESIDENT:

MARK NIDA,

LEG, Public Service Commission
P.O. Box 30221, Lansing MI 48909
517-241-6136, fax 517-241-6121, nidam@michigan.gov
CO-FIELDTRIP DIRECTORS:

MARK WOLLENSAK, CPG

Hamp, Mathews & Assoc, Inc.
15266 Ann Drive, Bath, MI 48808
Ph: 517-641-7333 Fax 517-641-7337
Cell 517-719-8321 wollensak@voyager.net
and

LEONARD ESPINOSA

Ph: 517-349-1917
espinosl@comcast.net

NEWSLETTER EDITOR:

ARLENE ANDERSON-VINCENT

Golder Associates
15851 South U.S. 27, Suite 50
Lansing, MI 48906
Ph: 517-318-3246, Fax 517-482-2460
aanderson-vincent@golder.com

ELECTRONIC PUBLICATIONS:

MARK WOLLENSAK

AAPG DELEGATES:

William Stelzer,
920 Long Lake Blvd., Suite 12
Lansing, MI 48911, 517-694-4770
stelzrb@aol.com
and
Dr. WILLIAM, HARRISON,
Western Michigan University
616-387-8691
William_harrison_iii@wmich.edu

MEETING CANCELLATION POLICY

Monthly meetings will be automatically cancelled whenever the National Weather Service issues a "Storm Warning" for the Lansing area. If driving conditions are poor but a "Warning" has not been issued please contact any member of the Executive Committee for the status of the meeting.

MICHIGAN BASIN GEOLOGICAL SOCIETY PUBLICATIONS

Historical CD #1: Nine out-of-print publications from 1949 through 1965 and 1998, 2000, \$15

Historical CD #2: Four out-of-print publications from 1947, 1959, 1983 and 1991, 2001, \$15

Historical CD #3: Six out-of-print publications from 1948, 1952, 1990 - 1995, 2001, \$15

Historical CD #4: Six out-of-print publications from 1957, 1958, 1961, 1967, 1968 and 1970, 2004, \$15

Historical CD #5: Five out-of-print publications from 1971, 1989, 2001, and Oil & Gas Fields Vol. 1 & 2, 1969 & 1992, 2006, \$50

(NEW) Historical CD #6: Six out-of-print publications from 1946, 1953, 1963, 1966, 1978 & 1987 plus the Richfield Challenge, 1952 & Tom Knapp's MS Thesis, 2007 \$15.

****Special Price** - Historical CDs 1 - 6 \$85**

NE Lower Peninsula Geological Field Conf., 2004, T. Black, M. Wollensak, On CD \$10

Stratigraphic Lexicon for Michigan, 2001, prepared by MBGS and published by DEQ, \$4

(NEW) Robert E. Mosher Geological Studies
A lifetime of geological research on Silurian Rocks with John T. Sanford. The disks are organized chronologically and include field work in North America and Europe. 2007, 2 CDs \$35.

Price Includes postage, handling and any applicable sales tax. Orders for publications should be **prepaid in U.S. Funds** and addressed to:
MBGS - Publications, P O Box 18074, Lansing
MI 48901-8074



MBGS Meeting

Wednesday, January 14, 2009

Location: MSU, Natural Science Building

The talk will begin at 7:00 PM in room 326.

Please note the room change.

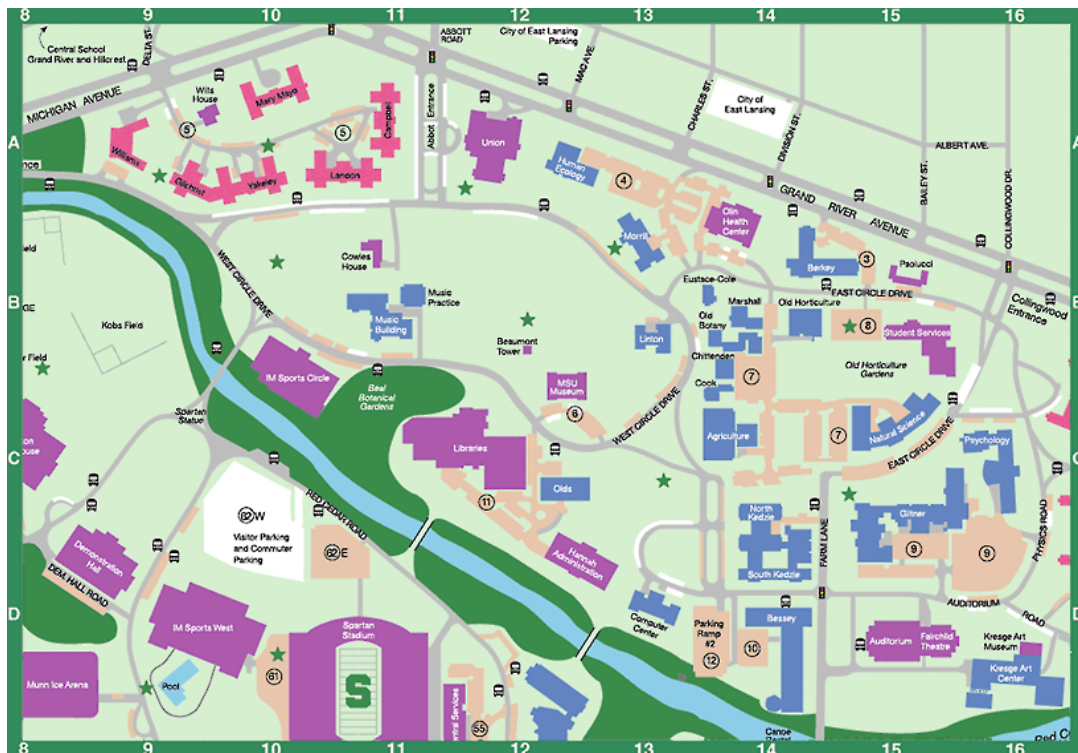
Refreshments will be provided after the talk in the Natural Science Building
No charge for this meeting.

Topic:
“3D Seismic Flower Structures”

By: **Allen Modroo**
Core Energy LLC

Information Contact: Thomas Godbold
P.O. Box 30256
Lansing, MI 48909-7756
Ph: Bus Ph: 517-241-1545, Fax 517-241-1595
E-mail: godboldt@michigan.gov

Between 5pm & 6pm you can park in Lot 9 behind Giltner Hall and the Psychology Building (former Physics and Astronomy building) for free. Otherwise you can try your luck with the metered slots clustered around the Natural Science Building and the adjacent Student Services Bldg, no charge after 6:00pm.



“3D Seismic Flower Structures”

By: Allen Modroo, Core Energy, LLC

Abstract.

Geophysicist-Exploration Manager, Allen Modroo, Core Energy LLC, will present examples of “flower structures”. He believes these features can be building blocks for reef growth and allow hydrothermal fluid movement and hence “saddle dolomite” throughout the Michigan Basin in Devonian through Ordovician or older strata. Results or recent drilling on these 3d seismic-defined targets will be presented as well as Allen’s thoughts on additional dolomitized targets within the Basin.

Bio: Allen Modroo

Allen graduated in 1975 with a BS in geology from Michigan Technological University and has over 33 years experience in oil and gas, holding positions in exploration and consulting throughout the United States and Canada. He helped form M&M Exploration Partners, a local exploration company, and is now a partner-manager with Core Energy LLC.

Allen Modroo
Exploration Manager/Partner
Core Energy LLC
954 Business Park Drive, Suite 1
1-231-946-2419 business
1-440-773-4688 cell

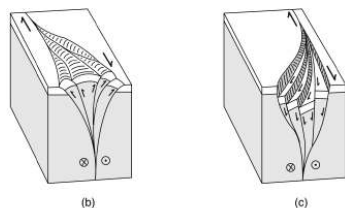
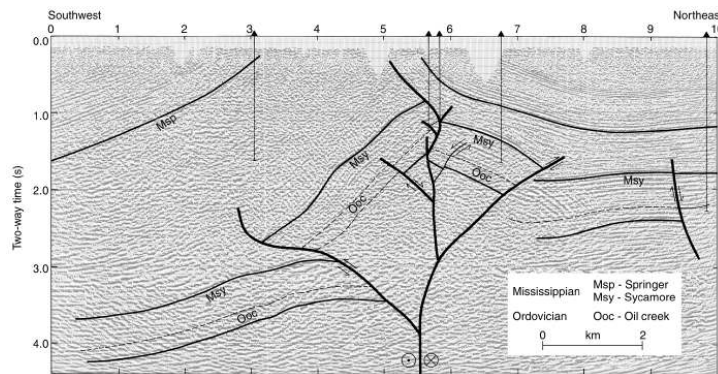


FIGURE 19.19 [a] Seismic-reflection profile across a strike-slip fault in the Ardmore Basin, Oklahoma, showing a positive flower structure. Msp and Msy are Mississippian formations, and Ooc is Ordovician. [b] Block diagram of a positive flower structure. [c] Block diagram of a negative flower structure.